

PART OF THE WEST 1/2 OF SECTION 14, T.5N., R.1W., S.L.B. & M.
THE RIDGE AT REGENCY HEIGHTS
AMENDED LOTS 1 & 2

TAXING UNIT: 25

IN OGDEN CITY
SCALE 1" = 50'

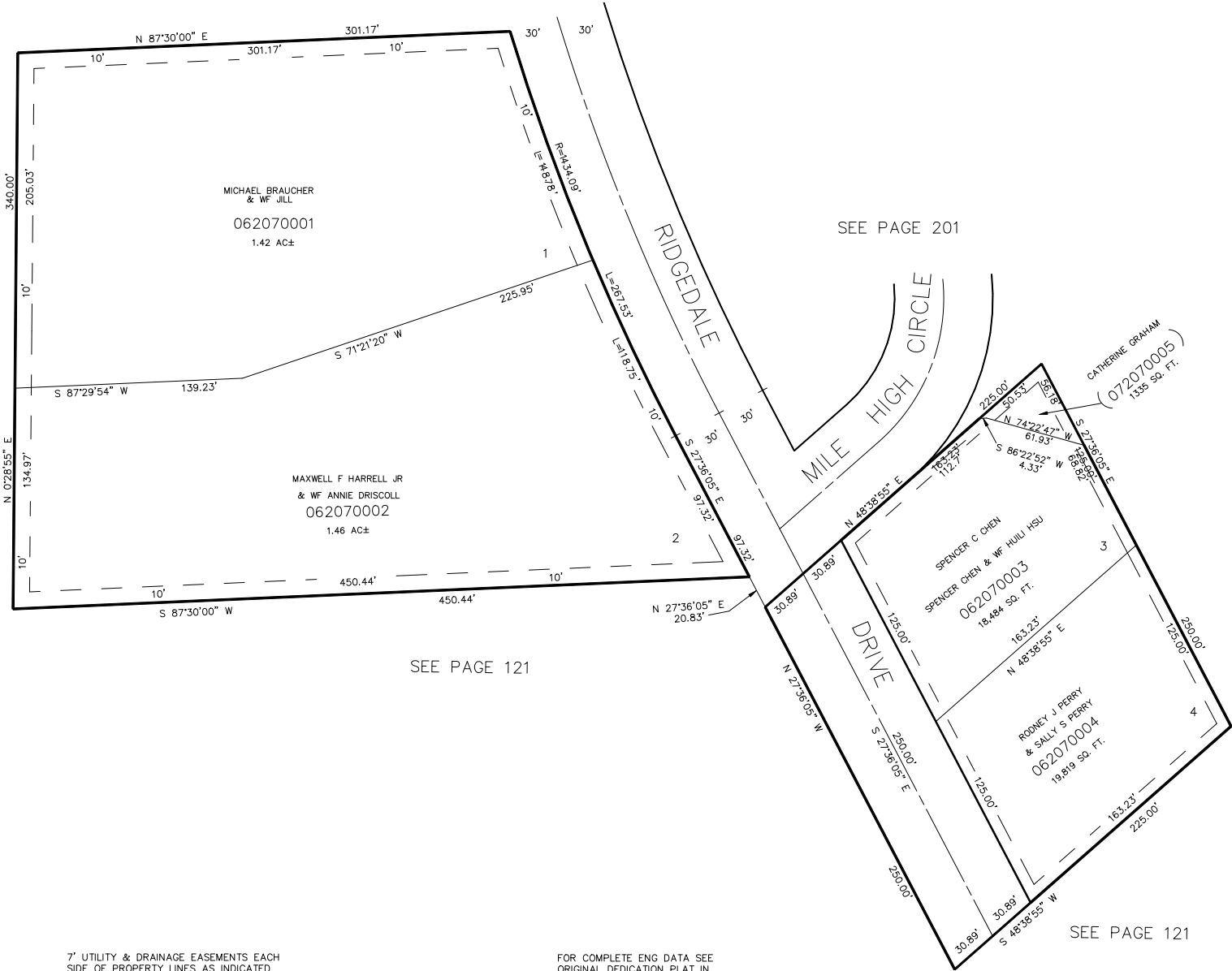
SEE PAGE 204

SEE PAGE 201

SEE PAGE 121

SEE PAGE 121

SEE PAGE 121



7' UTILITY & DRAINAGE EASEMENTS EACH
SIDE OF PROPERTY LINES AS INDICATED
BY DASHED LINES EXCEPT AS OTHERWISE
SHOWN.

FOR COMPLETE ENG DATA SEE
ORIGINAL DEDICATION PLAT IN
BOOK 32, PAGE 50 OF RECORDS.

FOR AMENDED DEDICATION PLAT SEE
BOOK 33, PAGE 75 OF RECORDS.

FOR TAX PURPOSES ONLY

KBR 06-90